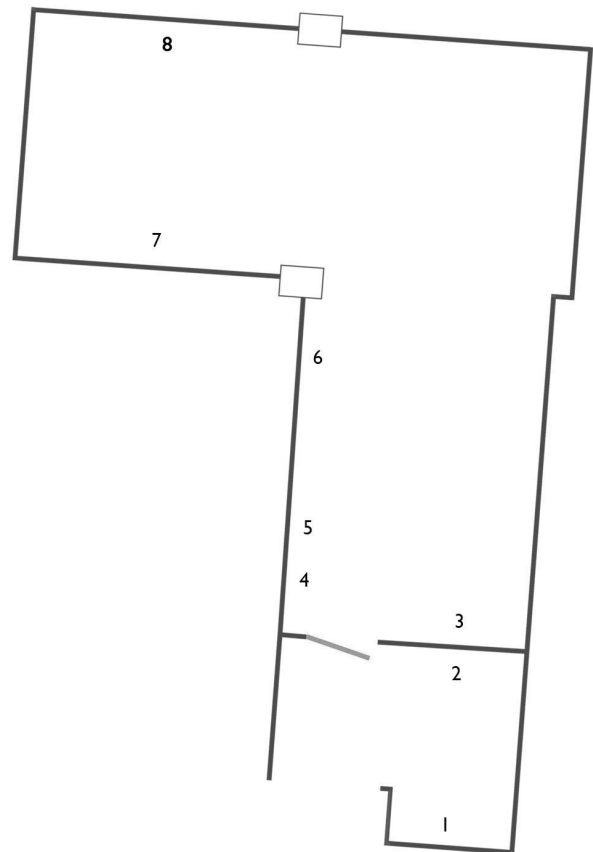


FU-ON CHUNG *LUMBERING TOWARDS VICTORY*

1. *Asphalt Glory* 2015  
300 x 350mm  
Acrylic and oil on linen
2. *Sheltered by the Winds of Chromatic Fury* 2015  
1500 x 1400mm  
Acrylic and oil on linen
3. *Finding Solace in a Gridlock Stupor* 2015  
1500 x 1400mm  
Acrylic and oil on linen
4. *Ramshackle Delusions* 2015  
300 x 350mm  
Acrylic and oil on linen
5. *Banking on Borrowed Time* 2015  
300 x 350mm  
Acrylic and oil on linen
6. *Trampled by the Blimp Brigade* 2015  
1500 x 1400mm  
Acrylic and oil on linen
7. *Fortress of the Comeback King* 2015  
1500 x 1400mm  
Acrylic on linen
8. *Midnight Slumber* 2015  
300 x 350mm  
Acrylic and oil on linen

all PoA





*Lumbering Towards Victory* presents a body of work expanding on the artist's desire to create new concentrations of intensity and sensation within his painting practice. Allusions to overflow and exuberance are mentioned as the catalyst for this body of work.

Fu-On Chung is interested in the notion of victory, whilst excess provides potential for the artist to spill into new modes of image making. Through continued renegotiation of the relationships between figure and ground, abstraction and figuration, and colour and sensation, new forms and motifs are willed into existence as the image materialises.

Fu-On Chung (1991) is an Auckland-based artist.

Previous group exhibitions include *Unpainted* (curated by Briar Holt), Blue Oyster, Dunedin, 2014; *Kaput*, PLAZA, Auckland, 2014; *Logical Coherence*, Ferari, Auckland 2013; and *Drinking from the Fire Hose 'New Artists Show Part II'*, Artspace, Auckland, 2012.

Enter via Samoa House Ln  
321 Karangahape Rd  
Newton  
Auckland 1010  
NEW ZEALAND

[gloveboxltd@gmail.com](mailto:gloveboxltd@gmail.com)  
[gloveboxltd.com](http://gloveboxltd.com)

Thursday 12 - 6pm  
Friday 12 - 6pm  
Saturday 1 - 4pm

[www.facebook.com](http://www.facebook.com/GLOVEBOXLTD)  
/GLOVEBOXLTD

**GLOVEBOX**